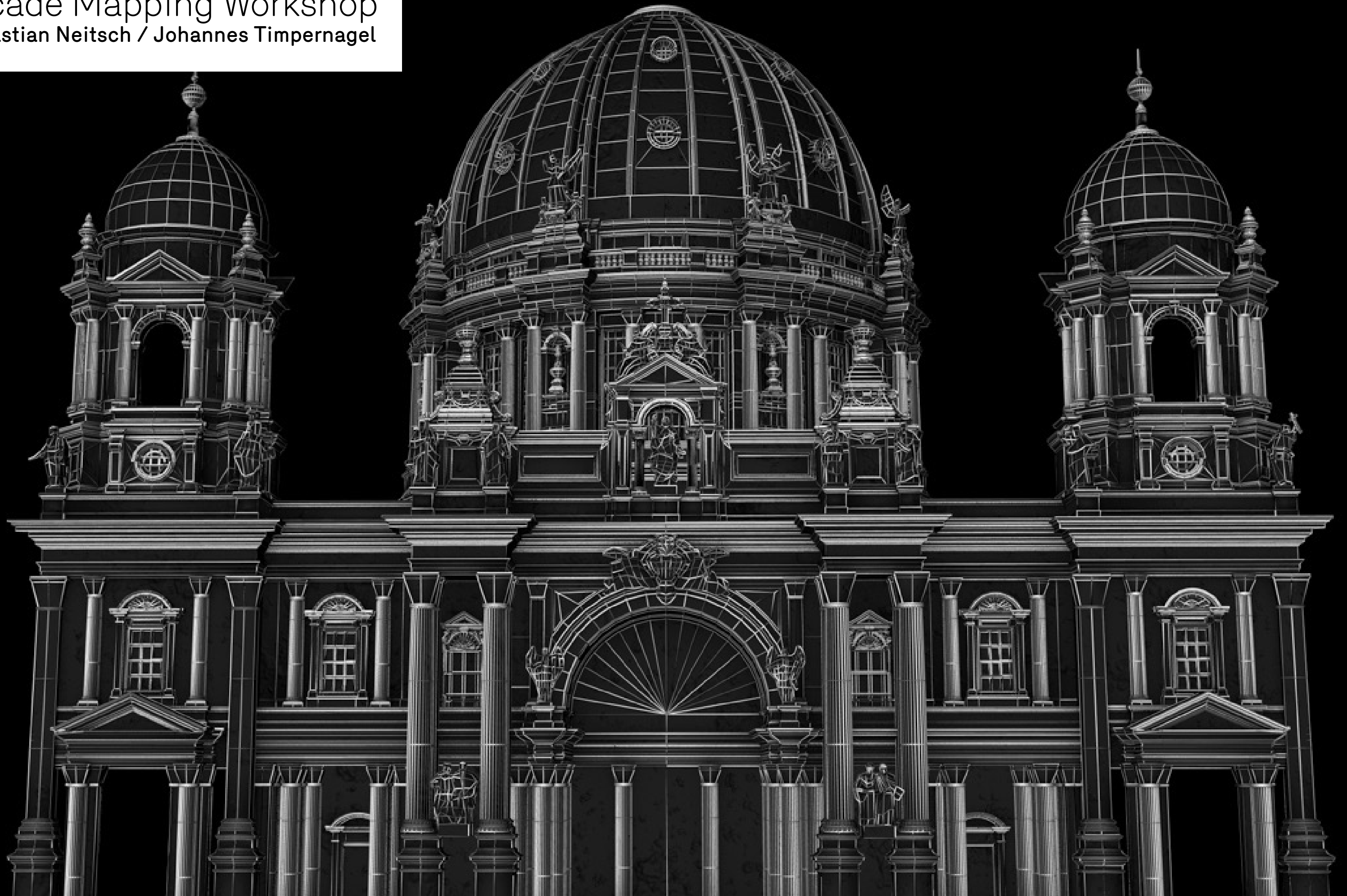


# Facade Mapping Workshop

Sebastian Neitsch / Johannes Timpernagel



# Facade Mapping Workshop

Sebastian Neitsch / Johannes Timpernagel



## A – MAPPING CHECKLIST



# Facade Mapping Workshop

Sebastian Neitsch / Johannes Timpernagel



A1. - FACADE

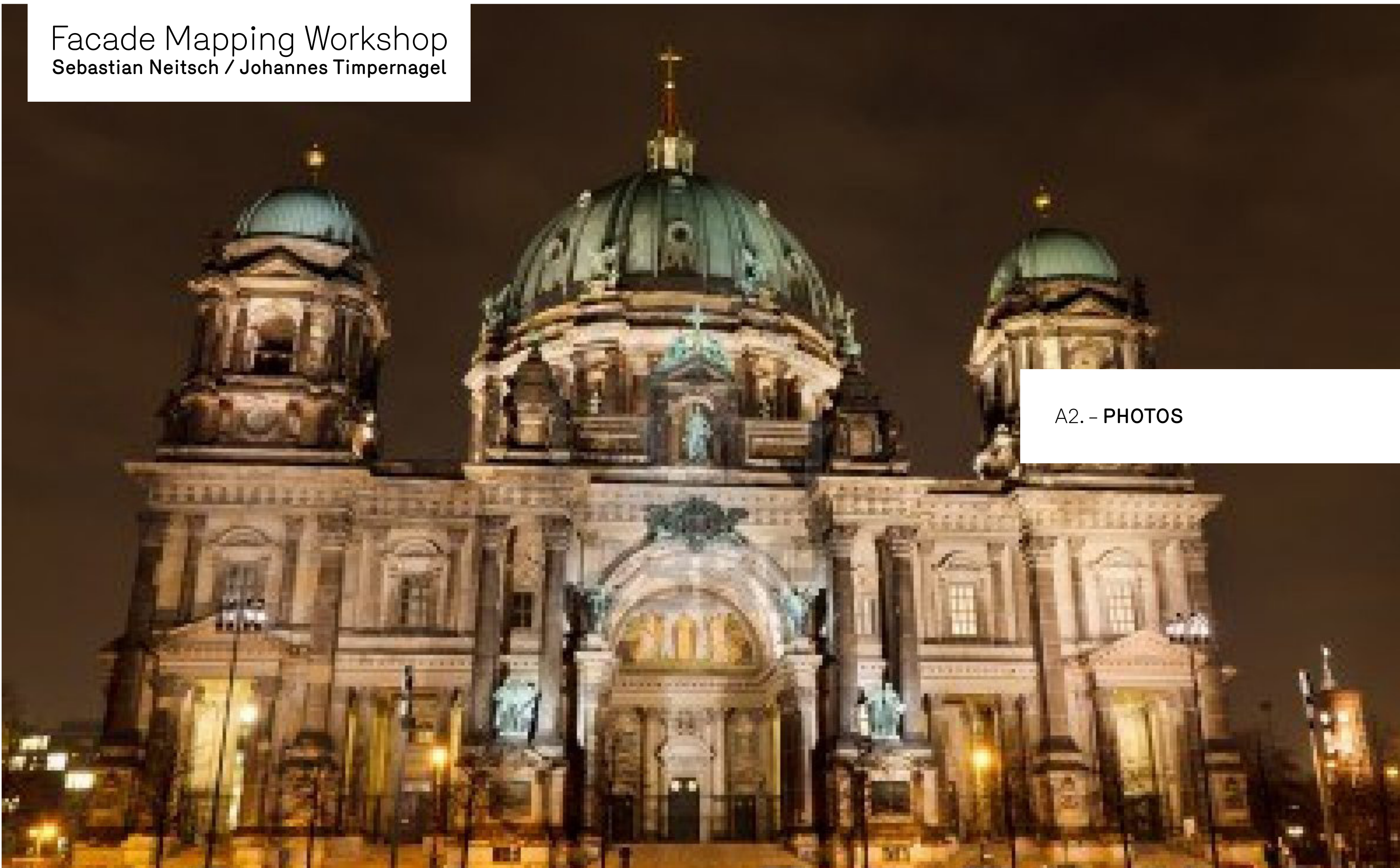




# Facade Mapping Workshop

Sebastian Neitsch / Johannes Timpernagel

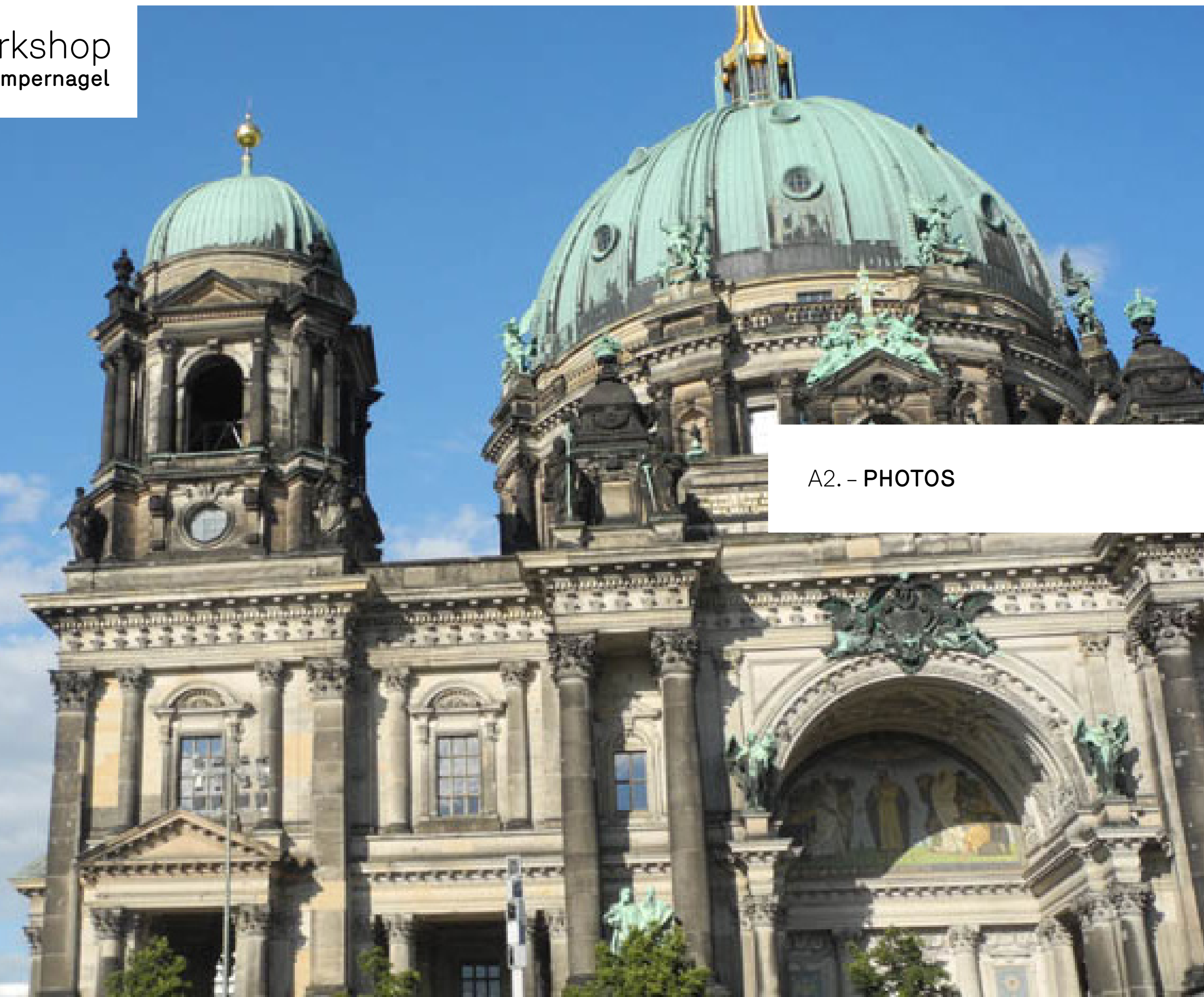
A2. - PHOTOS





# Facade Mapping Workshop

Sebastian Neitsch / Johannes Timpernagel



A2. - PHOTOS

# Facade Mapping Workshop

Sebastian Neitsch / Johannes Timpernagel

A2. - PHOTOS



# Facade Mapping Workshop

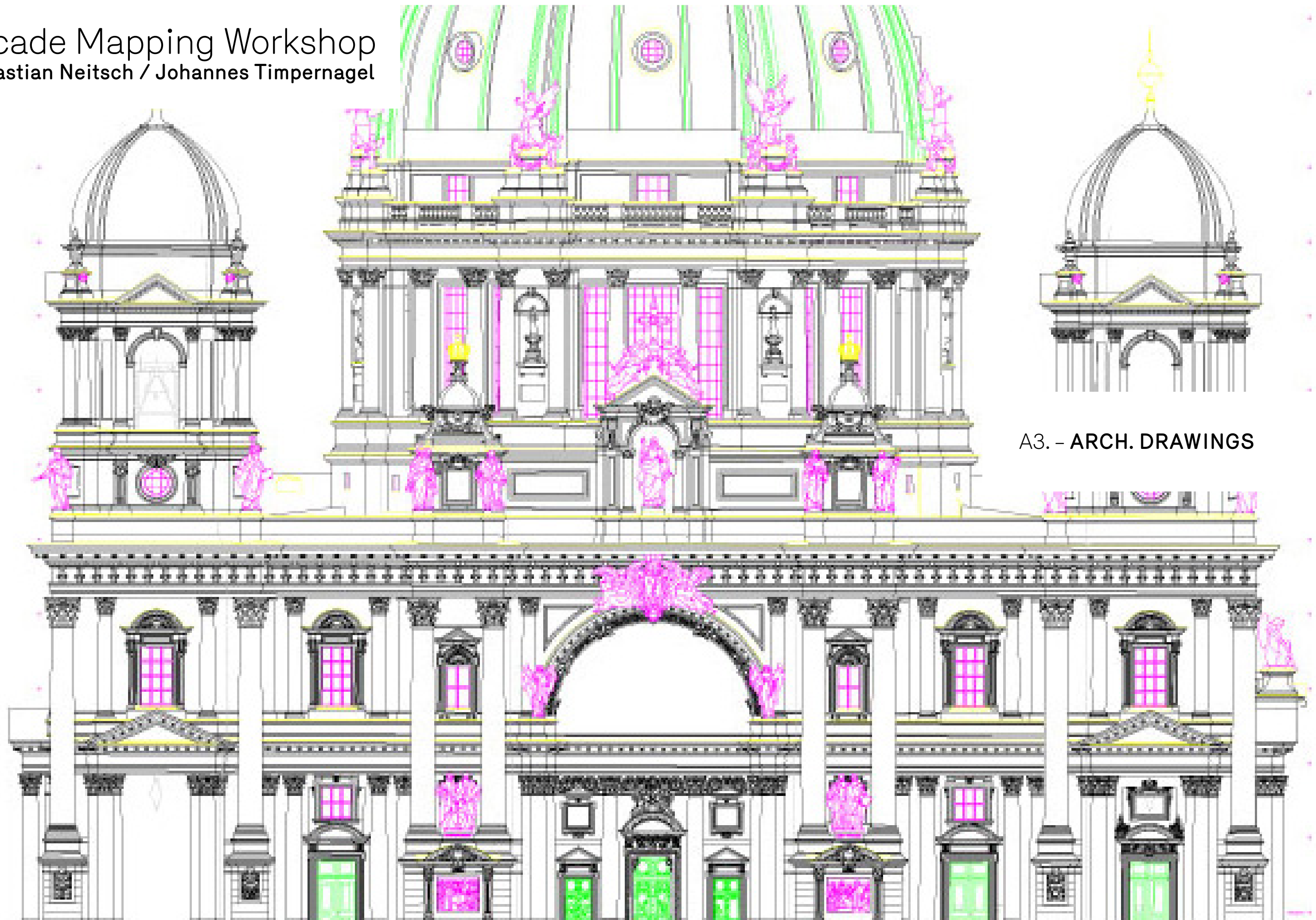
Sebastian Neitsch / Johannes Timpernagel



A2. - PHOTOS

# Facade Mapping Workshop

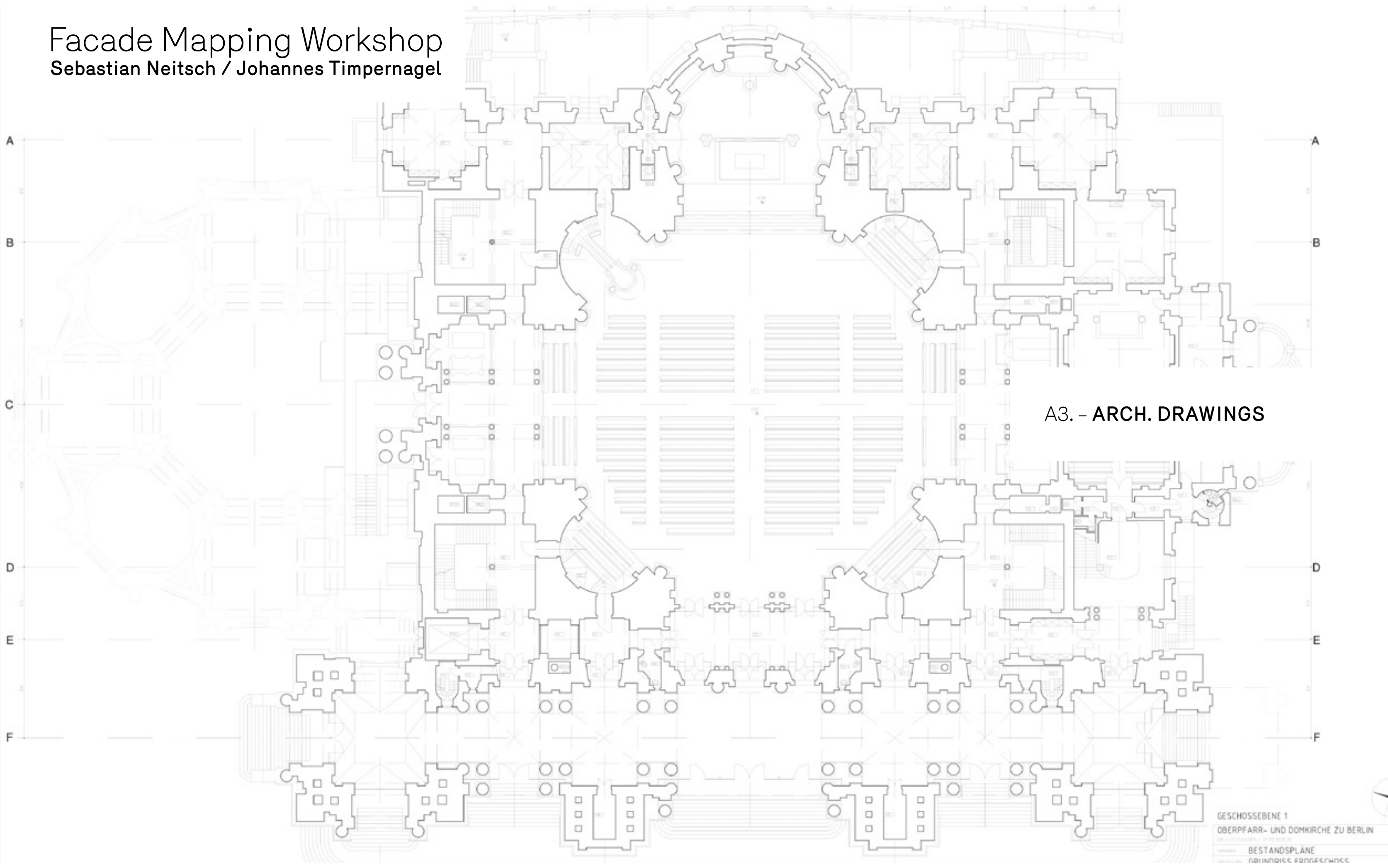
Sebastian Neitsch / Johannes Timpernagel



A3. - ARCH. DRAWINGS



Facade Mapping Workshop  
Sebastian Neitsch / Johannes Timpernagel

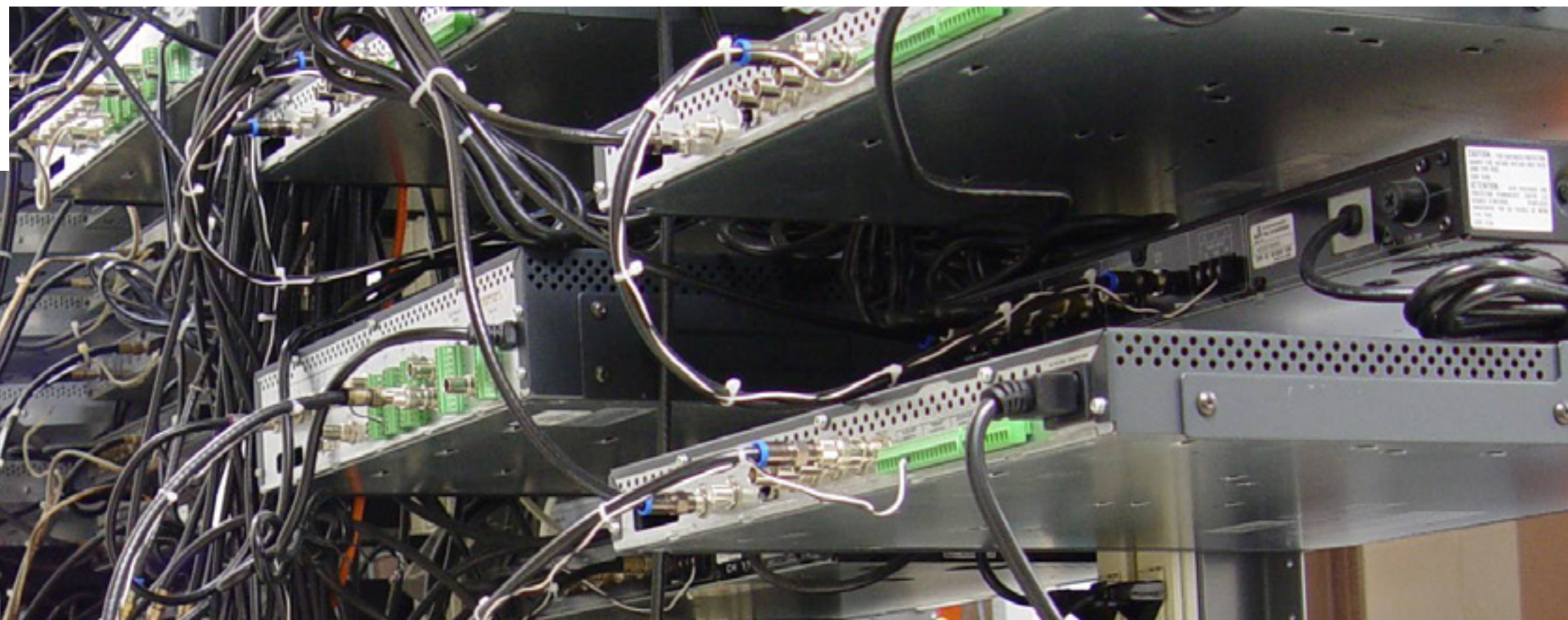


A3. – ARCH. DRAWINGS

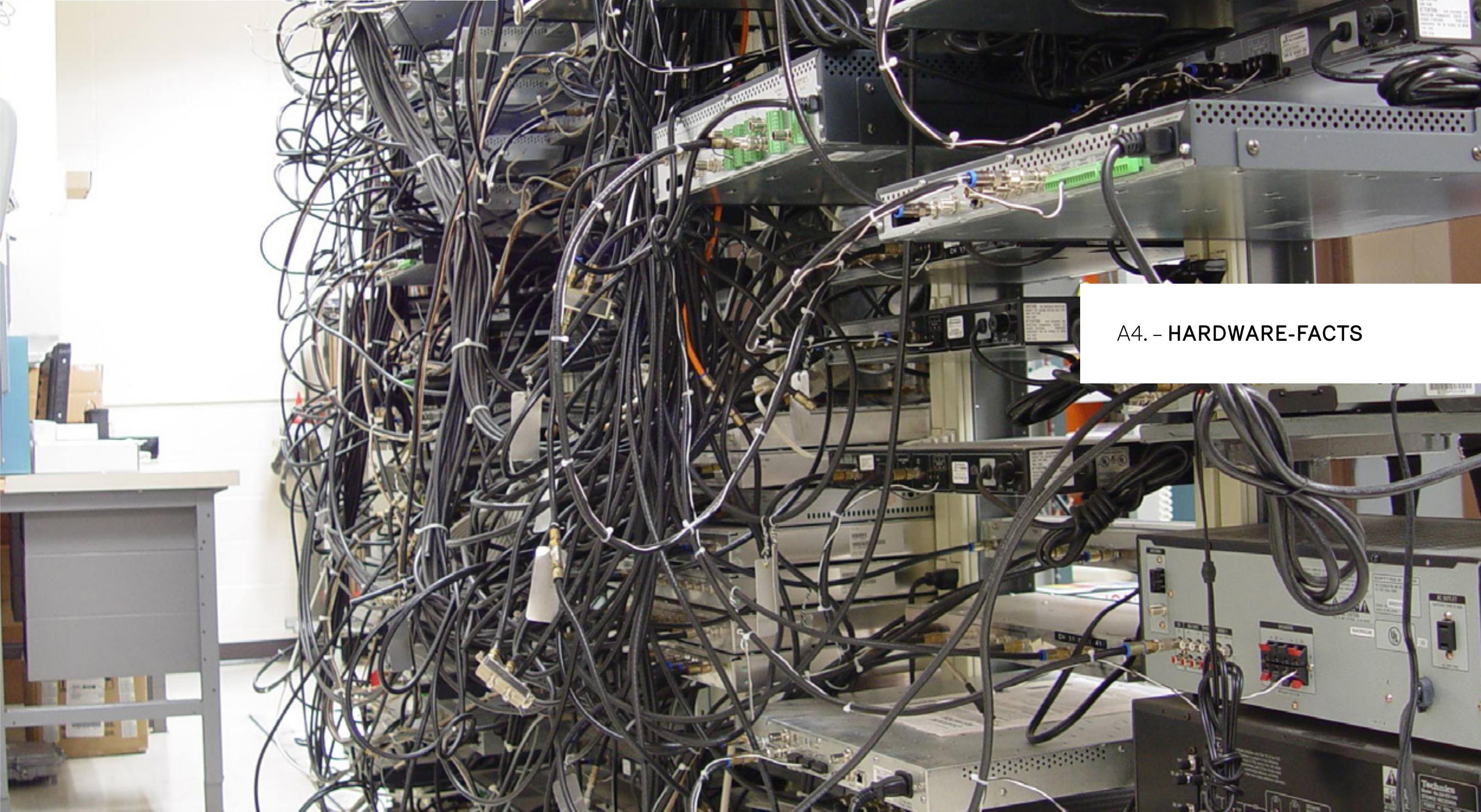


# Facade Mapping Workshop

Sebastian Neitsch / Johannes Timpernagel



A4. – HARDWARE-FACTS





GOOGLE:

projector central projection calculator

OR:

projektoren datenbank

A4.1. – Projector/Lenses

# Facade Mapping Workshop

Sebastian Neitsch / Johannes Timpernagel

Karte

Verkehr

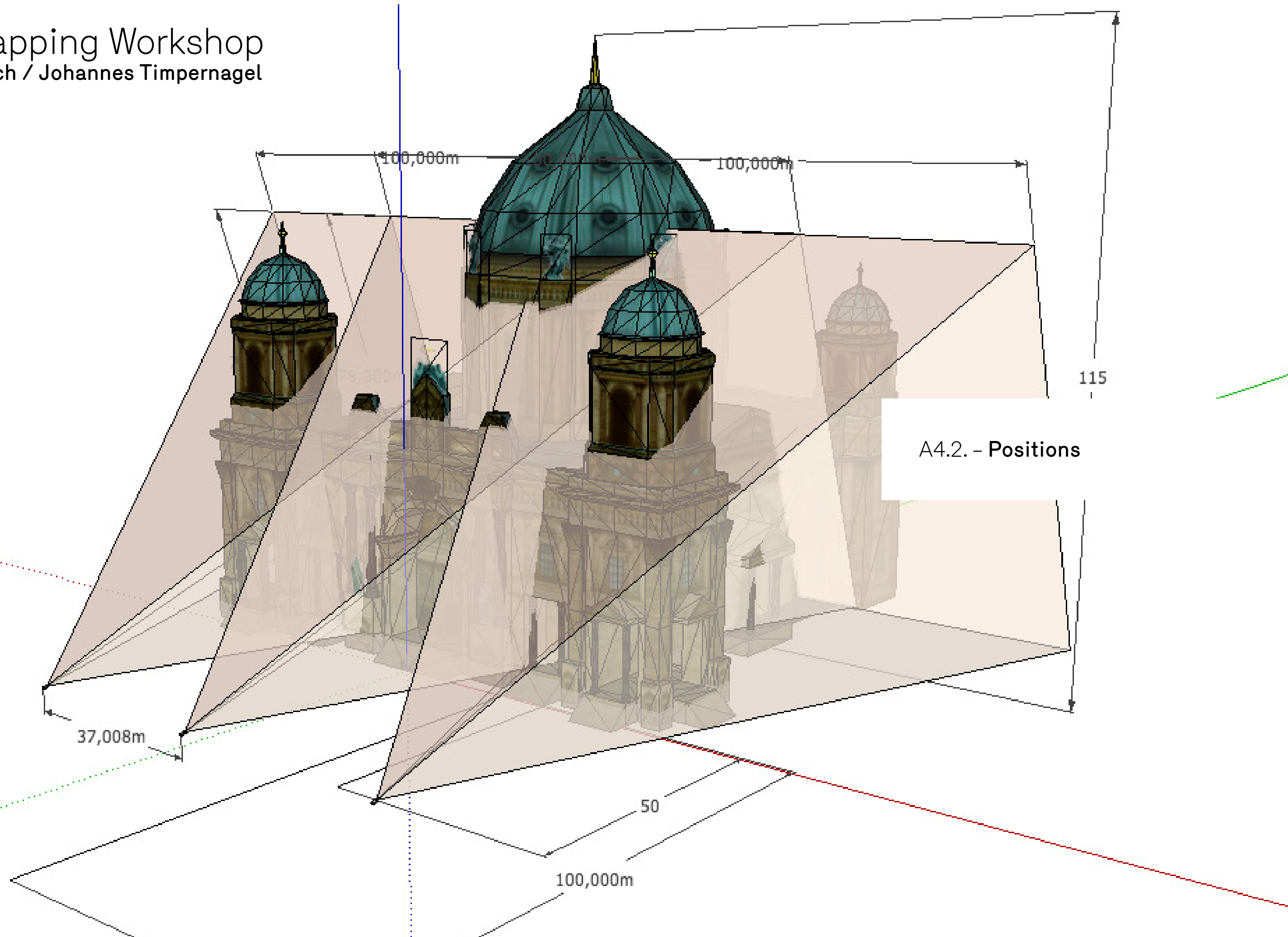
A4.2. - Positions

20 m  
50 ft



# Facade Mapping Workshop

Sebastian Neitsch / Johannes Timpernagel



# Facade Mapping Workshop

Sebastian Neitsch / Johannes Timpernagel



angestrebte Position  
für Projektoren  
  
jeweils drei x 15k  
pro Turm

A4.2. – Positions

che Standorte, einmal blau und  
einmal lila!  
Können zur Not auch näher an  
den Projektoren stehen.



# Facade Mapping Workshop

Sebastian Neitsch / Johannes Timpernagel

the place to be  
for history.

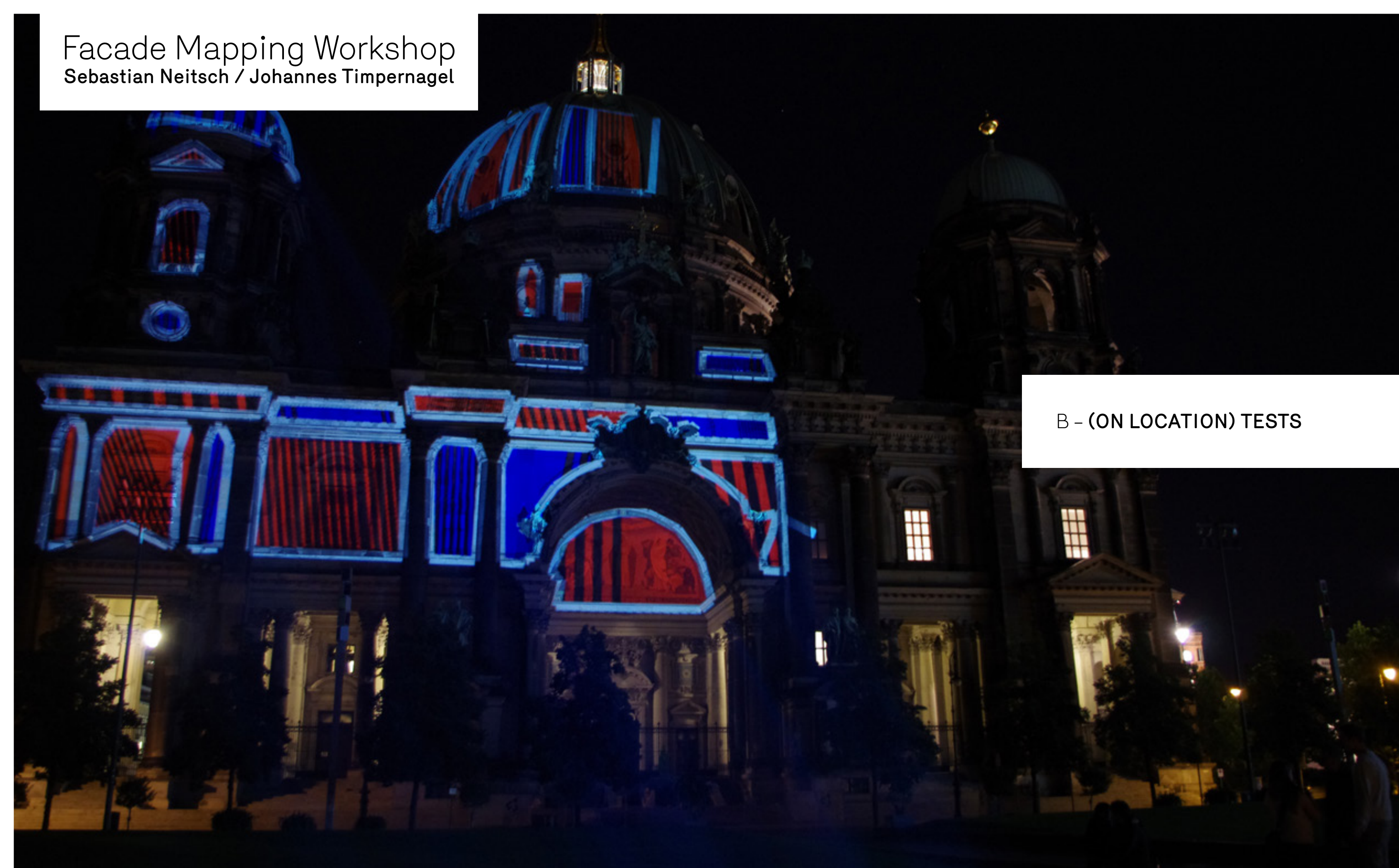
be  Berlin

A5. – EVENT-FACTS



# Facade Mapping Workshop

Sebastian Neitsch / Johannes Timpernagel



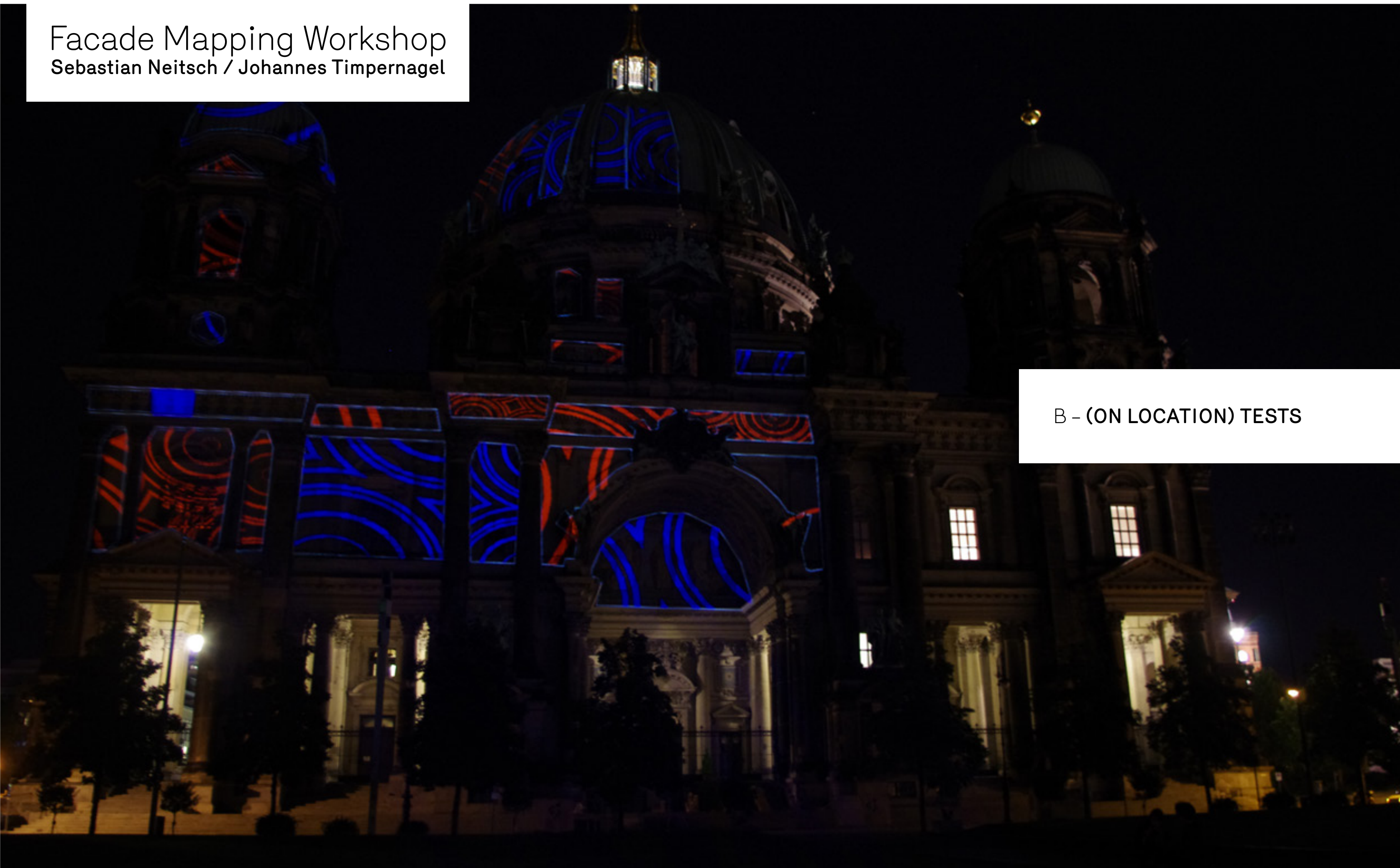
B – (ON LOCATION) TESTS



# Facade Mapping Workshop

Sebastian Neitsch / Johannes Timpernagel

B – (ON LOCATION) TESTS





# Facade Mapping Workshop

Sebastian Neitsch / Johannes Timpernagel

B – (ON LOCATION) TESTS

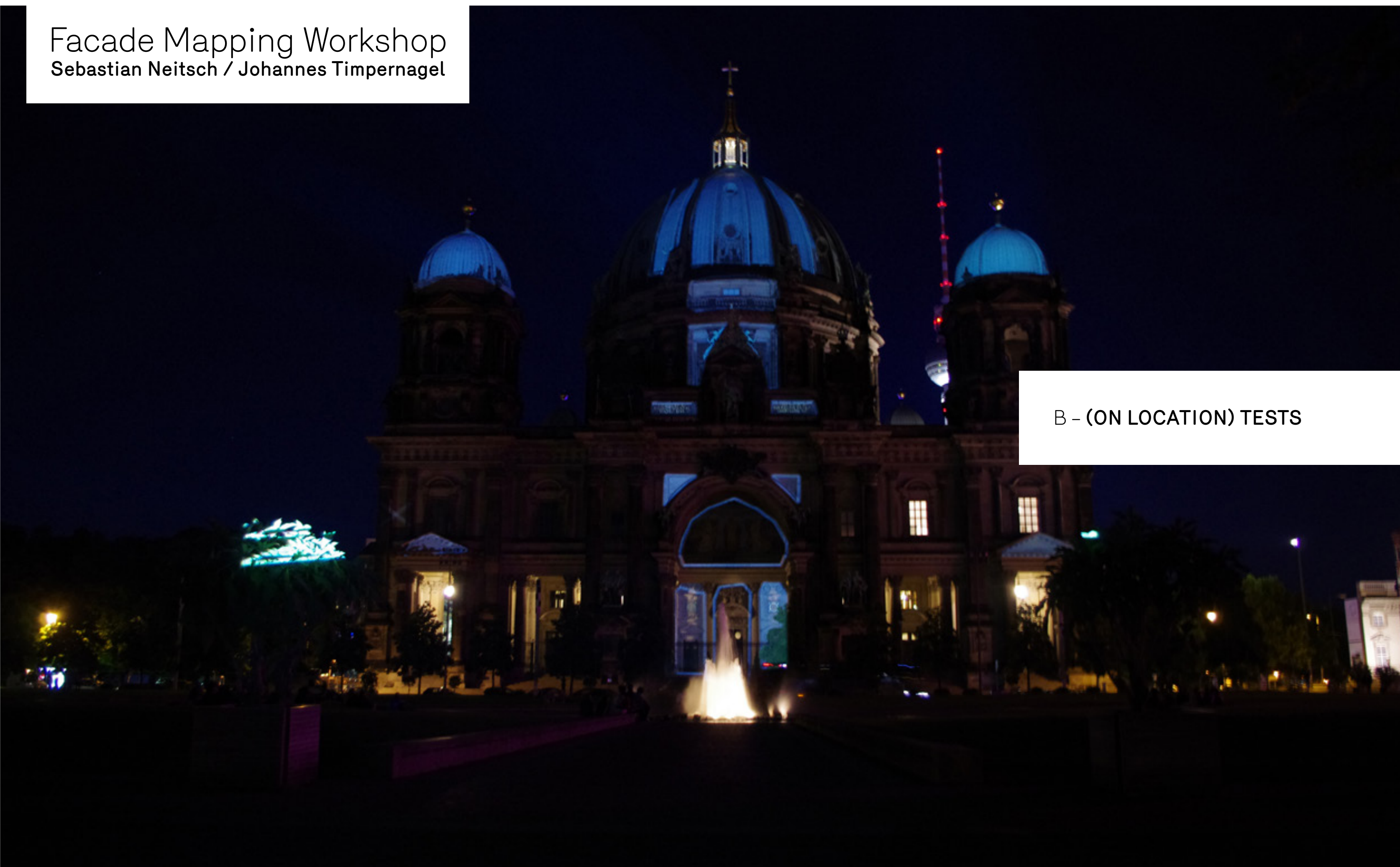




# Facade Mapping Workshop

Sebastian Neitsch / Johannes Timpernagel

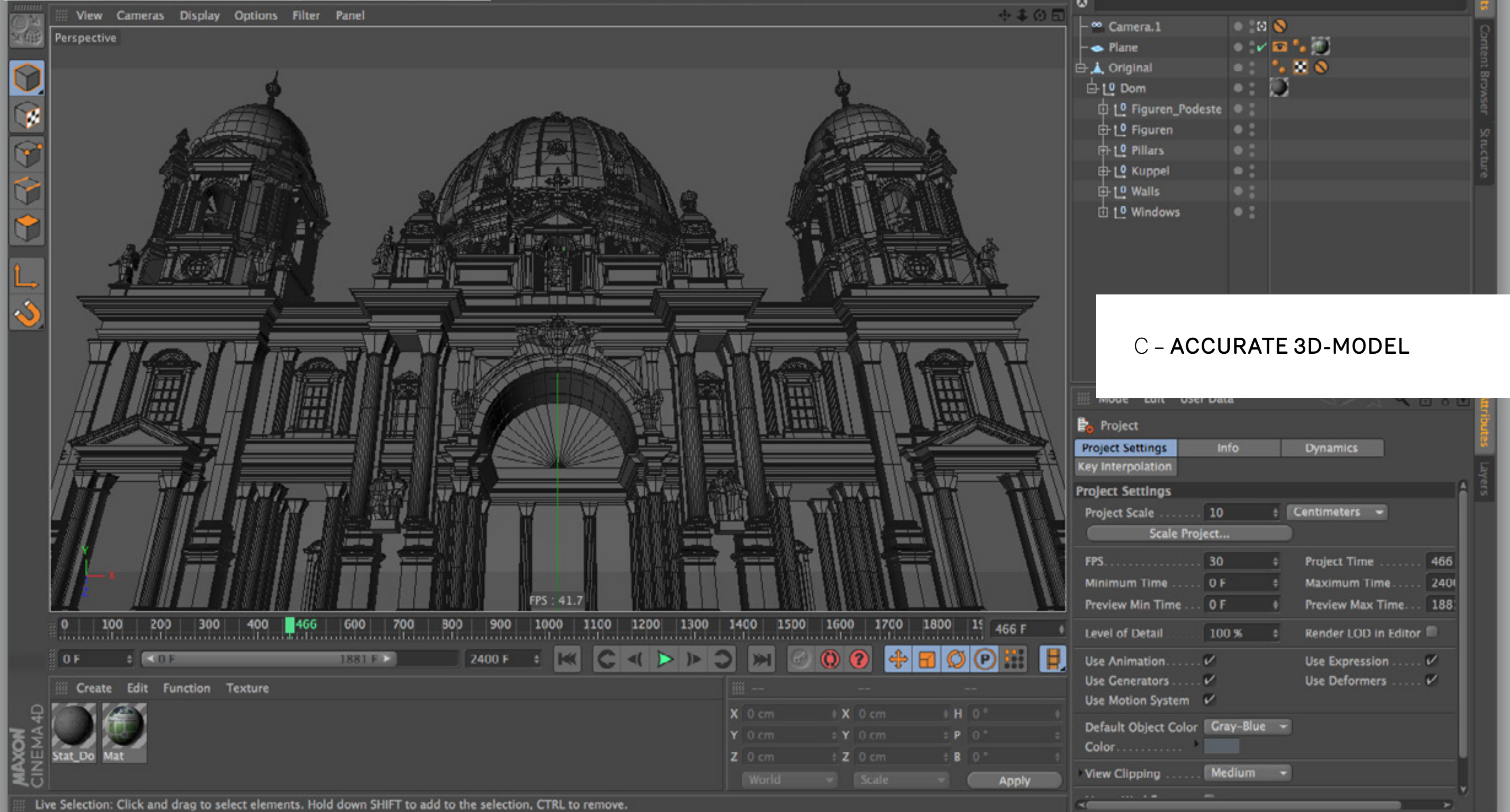
B – (ON LOCATION) TESTS





# Facade Mapping Workshop

Sebastian Neitsch / Johannes Timpernagel



C – ACCURATE 3D-MODEL



# Facade Mapping Workshop

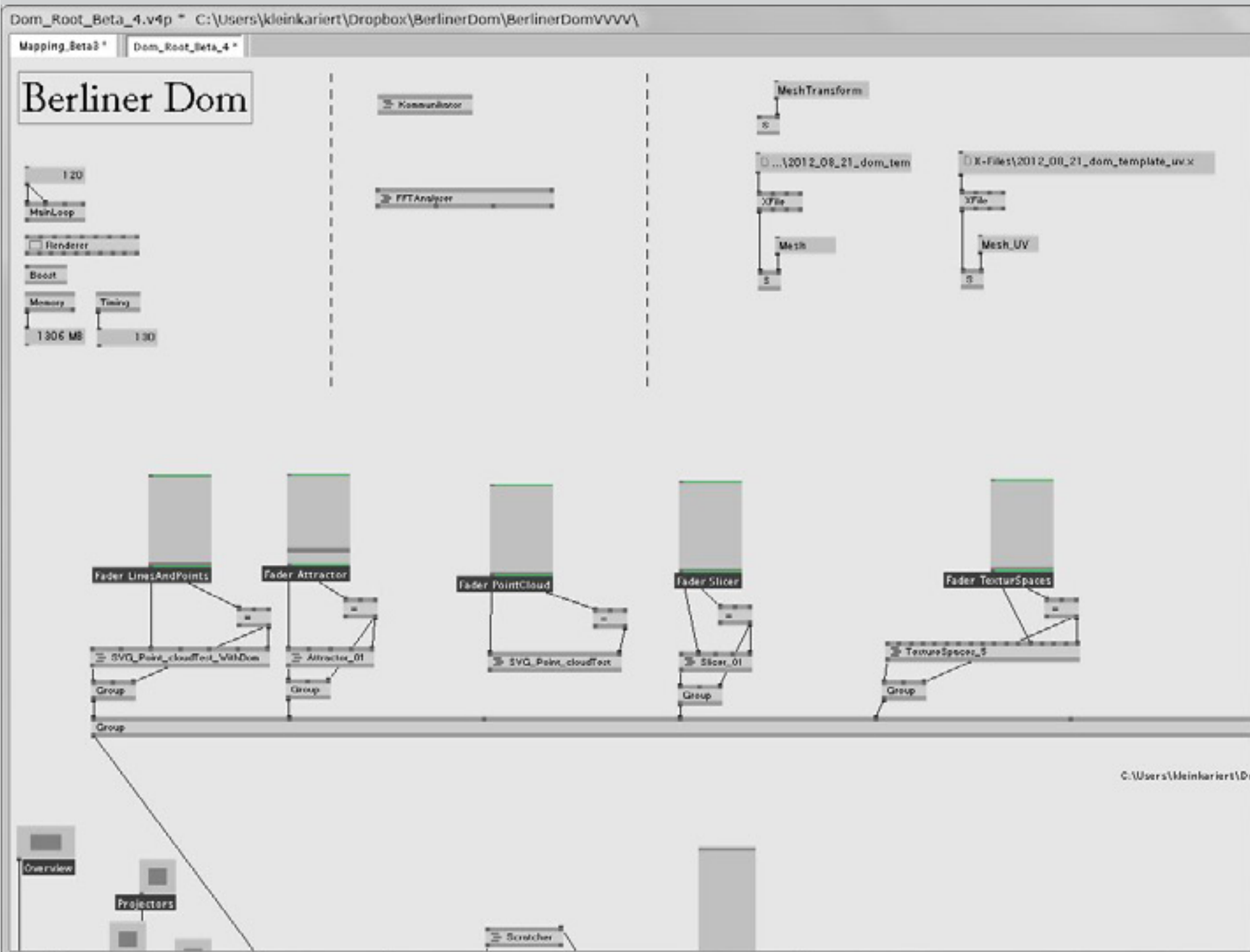
Sebastian Neitsch / Johannes Timpernagel

D – PRERENDERED CONTENT



# Facade Mapping Workshop

Sebastian Neitsch / Johannes Timpernagel



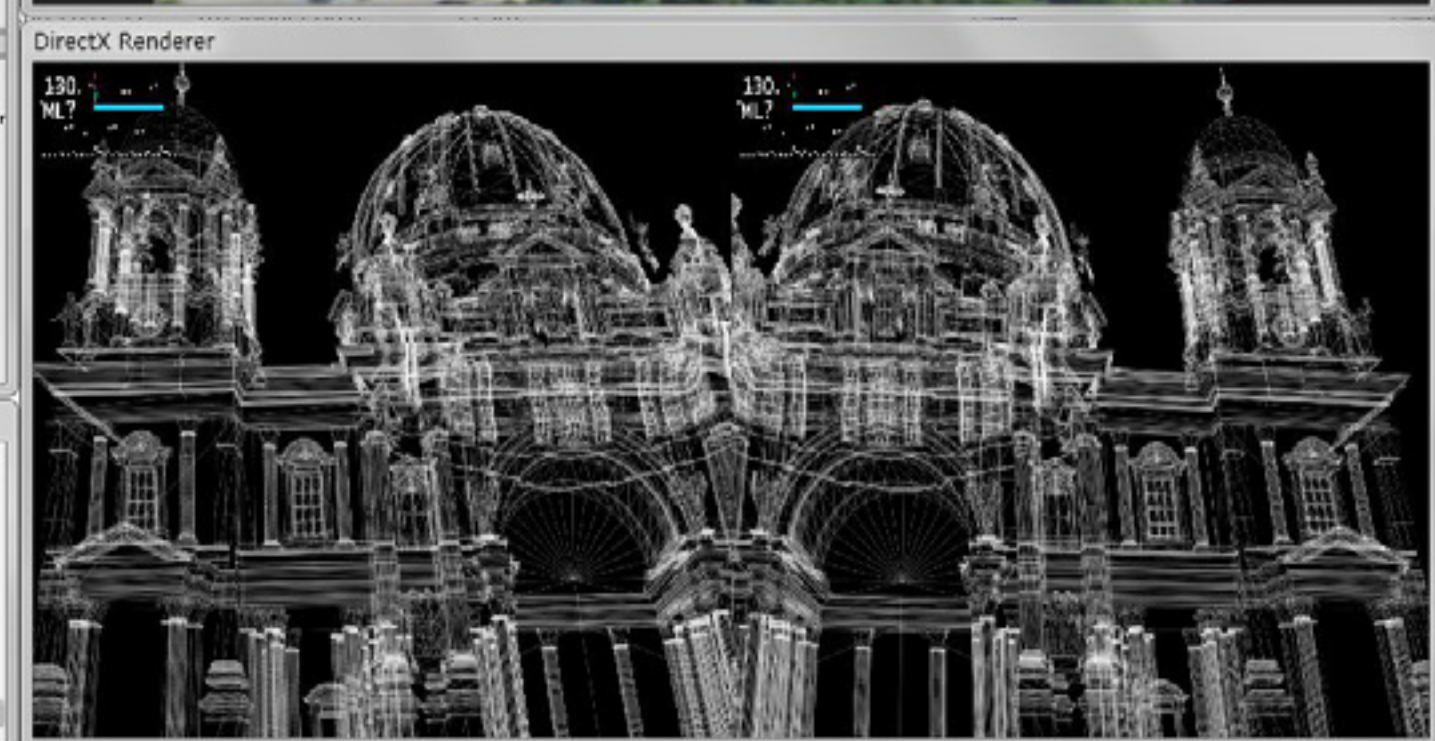
```

TTY Renderer
00:00:10 : Removing node: Samplegrabber from filtergraph
00:00:10 : Removing node: Internal Microphone (Conexant 2) from filtergraph
00:00:10 : Adding node to filtergraph: AudioIn (DShow9)
00:00:10 : AudioIn (DShow9).Audio --> Internal Microphone (Conexant 2).Capture
00:00:10 : Adding node to filtergraph: FFT (DShow9)
00:00:10 : Connecting from: AudioIn (DShow9).Audio to: FFT (DShow9).Audio
00:00:10 : ds connect from: Capture to: Input
00:00:10 : getting output of Samplegrabber
00:00:10 : getting input of Nullrenderer
00:00:10 * : XPath : -1072896680 on line 0:0 >>> XML document must have a top level element.
00:00:10 * : XPath : -1072896680 on line 0:0 >>> XML document must have a top level element.
00:00:41 - : Texture C:\users\kleinkariert\propbox\berlinerroom\berlinerroom\vvv\tex\Capture.JPG (width: 459, height: 623, format: X8R8G8B8) loaded in 0.014 seconds.

```



## E – VVVV-SETUP

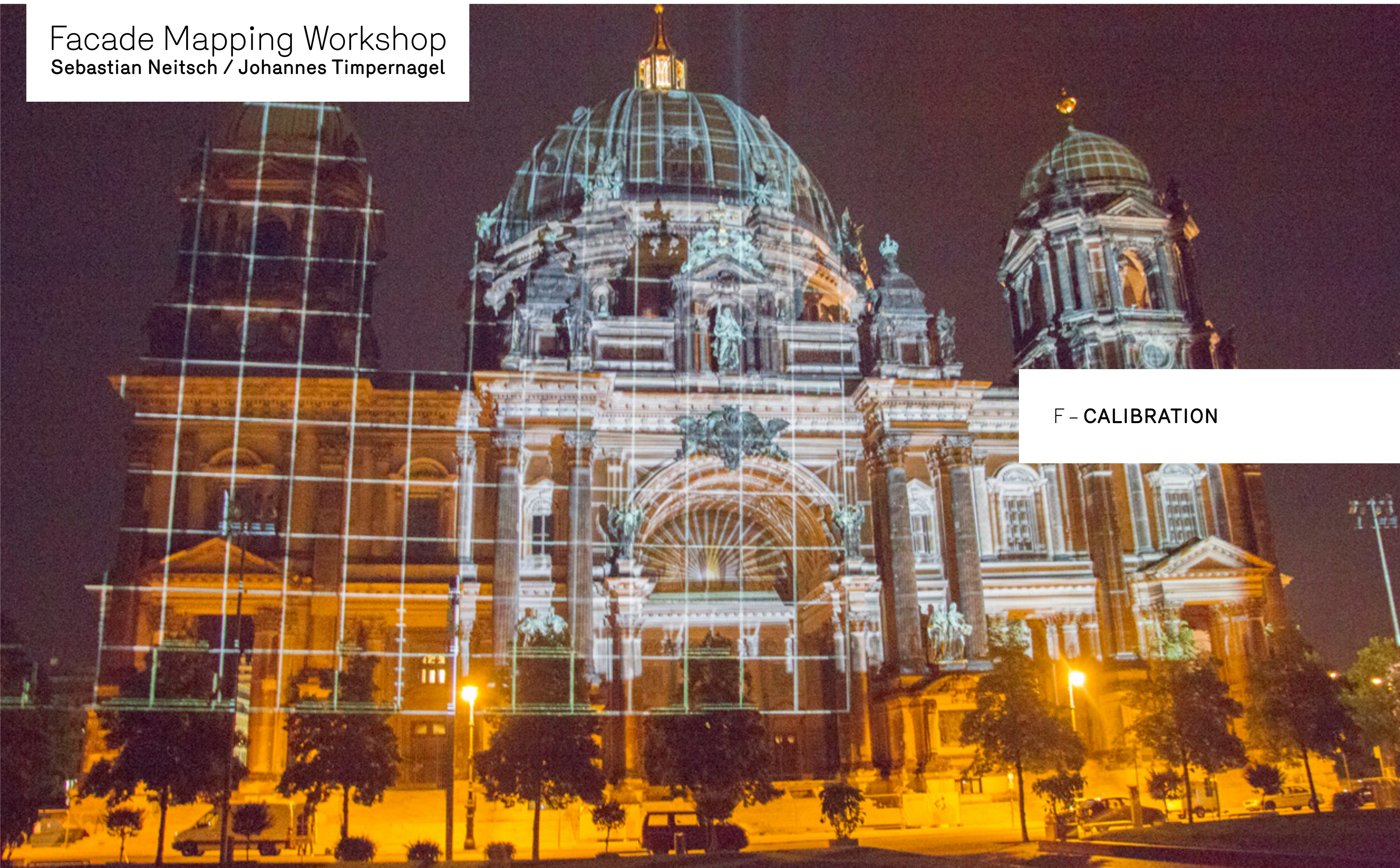




# Facade Mapping Workshop

Sebastian Neitsch / Johannes Timpernagel

F – CALIBRATION





# Facade Mapping Workshop

Sebastian Neitsch / Johannes Timpernagel



F – CALIBRATION



BERLINER DOM

G – DOCUMENTATION

